

# VAN STONE THERMOWELLS

For everyday temperature needs



## Application

Thermowells for temperature instruments are recommended for all process systems where pressure, velocity or viscous, abrasive and corrosive materials are present individually or in combination.

A properly selected thermowell will protect the temperature instrument from possible damage resulting from these process variables.

Furthermore, a thermowell permits removal of the temperature instrument for replacement, repair or testing without affecting the process media or the system.

## Standard Features

Process Connections:

Threaded

Instrument Connection:

½" NPSM Standard

Shank Configurations:

Stepped, straight, tapered

Bore Diameter:

.260", .385"

Materials:

Brass, AISI 304, AISI 316

(other materials available upon request)

Surface Finish:

Brass: 60-100 Ra

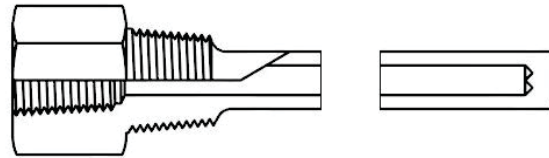
AISI 304 & AISI 316: 60-100 Ra

Ordering Information:

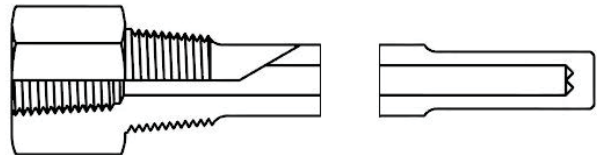
Please feel free to call 1-800-259-2706

Visit us at [MasterGaugeCo.com](http://MasterGaugeCo.com)

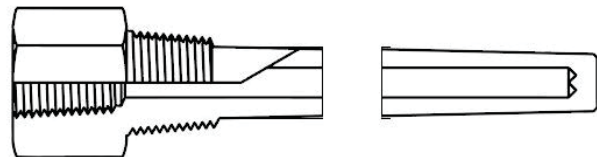
## Straight Configuration



## Stepped Configuration



## Tapered Configuration



**Master Gauge Co.**

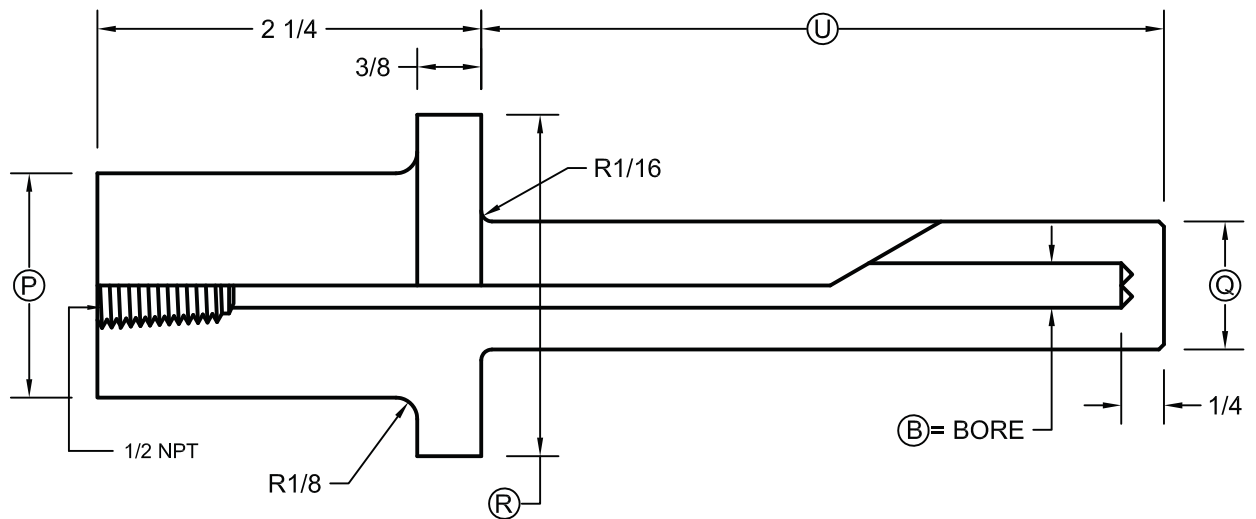


**WHEN UNDER PRESSURE THINK OF US!**

1150 W. GRAND AVE. CHICAGO, IL 60642 - TOLL-FREE: 1-800-259-2705 - PHONE: 1-312-666-2705 - FAX: 1-312-666-6458 - [MASTERGAUGECo.COM](http://MASTERGAUGECo.COM)

# VAN STONE THERMOWELLS

FOR 1/4 AND 3/8 DIAMETER ELEMENTS



**1" VAN STONE**  
FOR 1/4" DIAMETER ELEMENTS  
R = 2" P = 1.315

PART NO.	S	U	Q	B
1" 260VS- U2	4	2	3/4	0.260
1" 260VS- U4	6	4	3/4	0.260
1" 260VS- U7	9	7	3/4	0.260
1" 260VS- U10	12	10	3/4	0.260
1" 260VS- U13	15	13	3/4	0.260
1" 260VS- U16	18	16	3/4	0.260
1" 260VS- U22	24	22	3/4	0.260

**1" VAN STONE**  
FOR 3/8" DIAMETER ELEMENTS  
R = 2" P = 1.315

PART NO.	S	U	Q	B
1" 385VS- U2	4	2	7/8	0.385
1" 385VS- U4	6	4	7/8	0.385
1" 385VS- U7	9	7	7/8	0.385
1" 385VS- U10	12	10	7/8	0.385
1" 385VS- U13	15	13	7/8	0.385
1" 385VS- U16	18	16	7/8	0.385
1" 385VS- U22	24	22	7/8	0.385

**1 1/2" VAN STONE**  
FOR 1/4" DIAMETER ELEMENTS  
R = 2 7/8" P = 1.900

PART NO.	S	U	Q	B
1 1/2" 260VS- U2	4	2	3/4	0.260
1 1/2" 260VS- U4	6	4	3/4	0.260
1 1/2" 260VS- U7	9	7	3/4	0.260
1 1/2" 260VS- U10	12	10	3/4	0.260
1 1/2" 260VS- U13	15	13	3/4	0.260
1 1/2" 260VS- U16	18	16	3/4	0.260
1 1/2" 260VS- U22	24	22	3/4	0.260

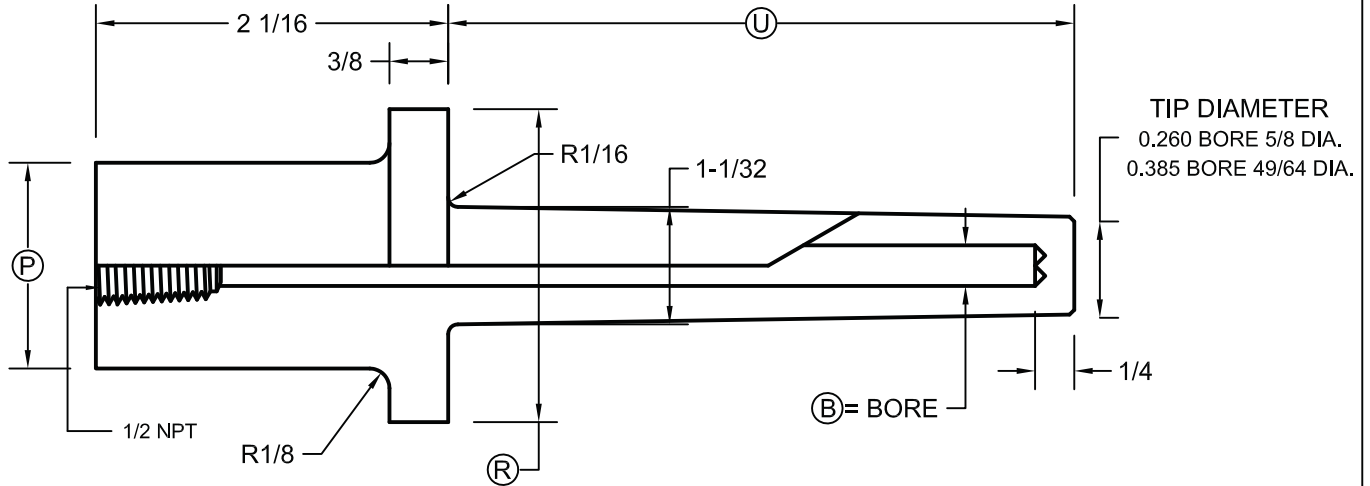
**1 1/2" VAN STONE**  
FOR 3/8" DIAMETER ELEMENTS  
R = 2 7/8" P = 1.900

PART NO.	S	U	Q	B
1 1/2" 385VS- U2	4	2	7/8	0.385
1 1/2" 385VS- U4	6	4	7/8	0.385
1 1/2" 385VS- U7	9	7	7/8	0.385
1 1/2" 385VS- U10	12	10	7/8	0.385
1 1/2" 385VS- U13	15	13	7/8	0.385
1 1/2" 385VS- U16	18	16	7/8	0.385
1 1/2" 385VS- U22	24	22	7/8	0.385

NOTE: S = STEM LENGTH

# VAN STONE THERMOWELLS TAPER SHANK

FOR 1/4 AND 3/8 DIAMETER ELEMENTS



**1" VAN STONE**  
FOR 1/4" DIAMETER ELEMENTS  
R = 2" P = 1.315

PART NO.	S	U	B
1" 260HVS- U2	4	2	0.260
1" 260HVS- U4	6	4	0.260
1" 260HVS- U7	9	7	0.260
1" 260HVS- U10	12	10	0.260
1" 260HVS- U13	15	13	0.260
1" 260HVS- U16	18	16	0.260
1" 260HVS- U22	24	22	0.260

**1" VAN STONE**  
FOR 3/8" DIAMETER ELEMENTS  
R = 2" P = 1.315

PART NO.	S	U	B
1" 385VS- U2	4	2	0.385
1" 385VS- U4	6	4	0.385
1" 385VS- U7	9	7	0.385
1" 385VS- U10	12	10	0.385
1" 385VS- U13	15	13	0.385
1" 385VS- U16	18	16	0.385
1" 385VS- U22	24	22	0.385

**1 1/2" VAN STONE**  
FOR 1/4" DIAMETER ELEMENTS  
R = 2 7/8" P = 1.900

PART NO.	S	U	B
1 1/2" 260HVS- U2	4	2	0.260
1 1/2" 260HVS- U4	6	4	0.260
1 1/2" 260HVS- U7	9	7	0.260
1 1/2" 260HVS- U10	12	10	0.260
1 1/2" 260HVS- U13	15	13	0.260
1 1/2" 260HVS- U16	18	16	0.260
1 1/2" 260HVS- U22	24	22	0.260

**1 1/2" VAN STONE**  
FOR 3/8" DIAMETER ELEMENTS  
R = 2 7/8" P = 1.900

PART NO.	S	U	B
1 1/2" 385HVS- U2	4	2	0.385
1 1/2" 385HVS- U4	6	4	0.385
1 1/2" 385HVS- U7	9	7	0.385
1 1/2" 385HVS- U10	12	10	0.385
1 1/2" 385HVS- U13	15	13	0.385
1 1/2" 385HVS- U16	18	16	0.385
1 1/2" 385HVS- U22	24	22	0.385

NOTE: S = STEM LENGTH