

SOCKET-WELD DESIGN THERMOWELLS

For everyday temperature needs

Application

Thermowells for temperature instruments are recommended for all process systems where pressure, velocity or viscous, abrasive and corrosive materials are present individually or in combination.

A properly selected thermowell will protect the temperature instrument from possible damage resulting from these process variables.

Furthermore, a thermowell permits removal of the temperature instrument for replacement, repair or testing without affecting the process media or the system.



Standard Features

Process Connections:

Threaded

Instrument Connection:

½" NPSM Standard

Shank Configurations:

Stepped, straight, tapered

Bore Diameter:

.260", .385"

Materials:

Brass, AISI 304, AISI 316

(other materials available upon request)

Surface Finish:

Brass: 60-100 Ra

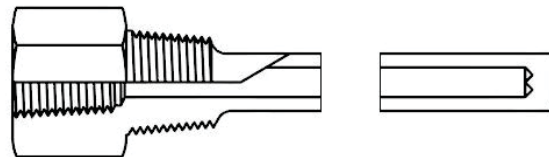
AISI 304 & AISI 316: 60-100 Ra

Ordering Information:

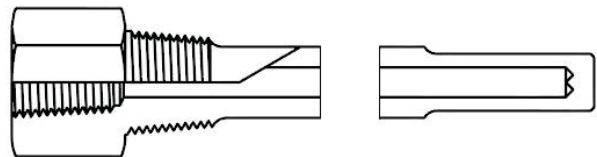
Please feel free to call 1-800-259-2706

Visit us at MasterGaugeCo.com

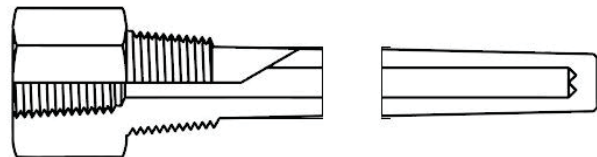
Straight Configuration



Stepped Configuration



Tapered Configuration



Master Gauge Co.



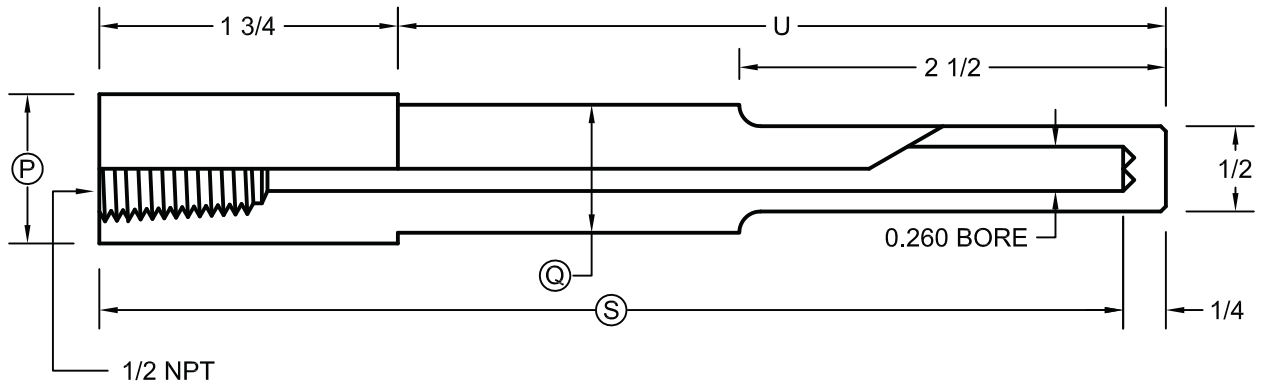
WHEN UNDER PRESSURE THINK OF US!

1150 W. GRAND AVE. CHICAGO, IL 60642 - TOLL-FREE: 1-800-259-2705 - PHONE: 1-312-666-2705 - FAX: 1-312-666-6458 - MASTERGAUGECo.COM

SOCKET-WELD DESIGN THERMOWELLS

FOR 1/4 AND 3/8 DIAMETER ELEMENTS

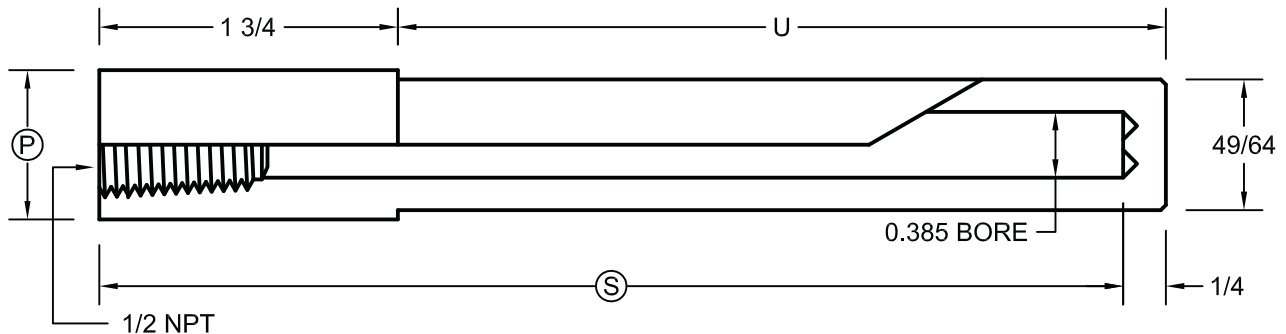
260W SOCKET-WELD



P	PART NO.	Q	P	S
PIPE SIZE	3/4 260W-U2 1/2	3/4	1.050	4
	3/4 260W-U4 1/2	3/4	1.050	6
3/4 NOMINAL (1.050 DIA)	3/4 260W-U7 1/2	3/4	1.050	9
	3/4 260W-U10 1/2	3/4	1.050	12
	3/4 260W-U13 1/2	3/4	1.050	15
	3/4 260W-U16 1/2	3/4	1.050	18
	3/4 260W-U22 1/2	3/4	1.050	24

P	PART NO.	Q	P	S
PIPE SIZE	1 260W-U2 1/2	7/8	1.315	4
	1 260W-U4 1/2	7/8	1.315	6
1 NOMINAL (1.315 DIA)	1 260W-U7 1/2	7/8	1.315	9
	1 260W-U10 1/2	7/8	1.315	12
	1 260W-U13 1/2	7/8	1.315	15
	1 260W-U16 1/2	7/8	1.315	18
	1 260W-U22 1/2	7/8	1.315	24

385W SOCKET-WELD



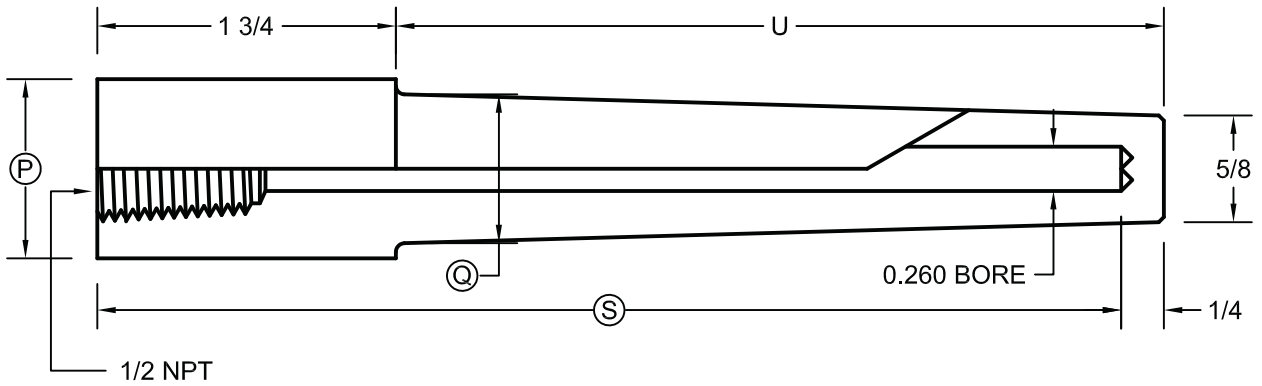
P	PART NO.	P	S
PIPE SIZE	3/4 385W-U2 1/2	1.050	4
	3/4 385W-U4 1/2	1.050	6
3/4 NOMINAL (1.050 DIA)	3/4 385W-U7 1/2	1.050	9
	3/4 385W-U10 1/2	1.050	12
	3/4 385W-U13 1/2	1.050	15
	3/4 385W-U16 1/2	1.050	18
	3/4 385W-U22 1/2	1.050	24

P	PART NO.	P	S
PIPE SIZE	1 385W-U2 1/2	1.315	4
	1 385W-U4 1/2	1.315	6
1 NOMINAL (1.315 DIA)	1 385W-U7 1/2	1.315	9
	1 385W-U10 1/2	1.315	12
	1 385W-U13 1/2	1.315	15
	1 385W-U16 1/2	1.315	18
	1 385W-U22 1/2	1.315	24

SOCKET-WELD DESIGN THERMOWELLS

FOR 1/4 AND 3/8 DIAMETER ELEMENTS

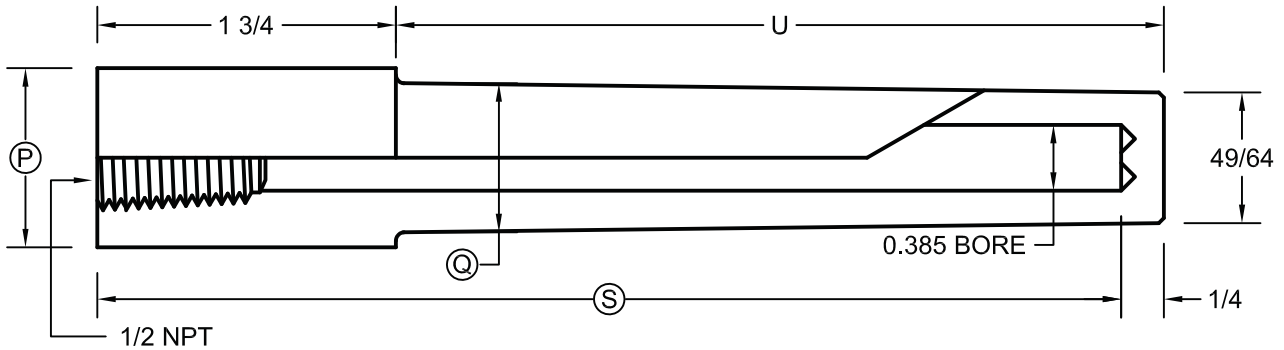
260WH SOCKET-WELD



P	PART NO.	Q	P	S
PIPE SIZE	3/4 260WH-U2 1/2	7/8	1.050	4
	3/4 260WH-U4 1/2	7/8	1.050	6
3/4 NOMINAL (1.050 DIA)	3/4 260WH-U7 1/2	7/8	1.050	9
	3/4 260WH-U10 1/2	7/8	1.050	12
	3/4 260WH-U13 1/2	7/8	1.050	15
	3/4 260WH-U16 1/2	7/8	1.050	18
	3/4 260WH-U22 1/2	7/8	1.050	24

P	PART NO.	Q	P	S
PIPE SIZE	1 260WH-U2 1/2	1-1/16	1.315	4
	1 260WH-U4 1/2	1-1/16	1.315	6
1 NOMINAL (1.315 DIA)	1 260WH-U7 1/2	1-1/16	1.315	9
	1 260WH-U10 1/2	1-1/16	1.315	12
	1 260WH-U13 1/2	1-1/16	1.315	15
	1 260WH-U16 1/2	1-1/16	1.315	18
	1 260WH-U22 1/2	1-1/16	1.315	24

385WH SOCKET-WELD



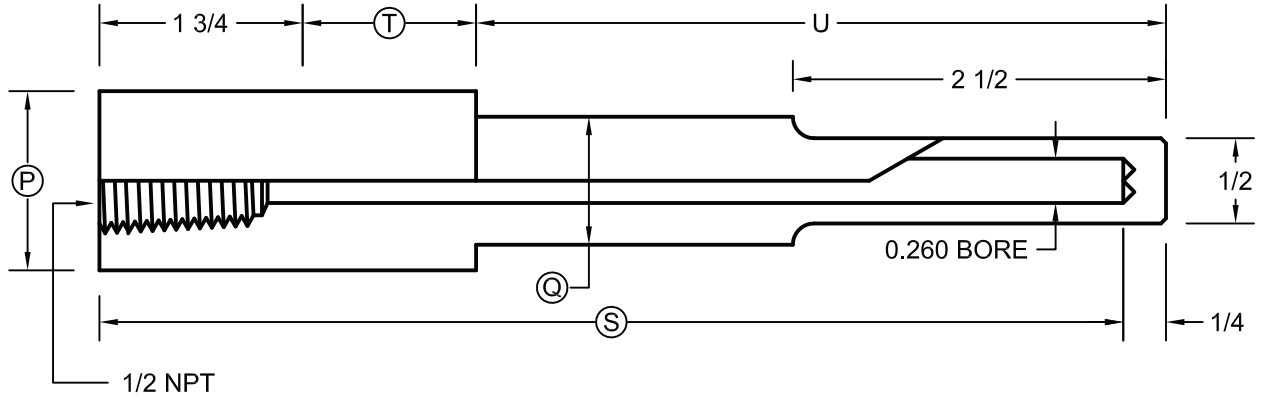
P	PART NO.	Q	P	S
PIPE SIZE	3/4 385WH-U2 1/2	7/8	1.050	4
	3/4 385WH-U4 1/2	7/8	1.050	6
3/4 NOMINAL (1.050 DIA)	3/4 385WH-U7 1/2	7/8	1.050	9
	3/4 385WH-U10 1/2	7/8	1.050	12
	3/4 385WH-U13 1/2	7/8	1.050	15
	3/4 385WH-U16 1/2	7/8	1.050	18
	3/4 385WH-U22 1/2	7/8	1.050	24

P	PART NO.	Q	P	S
PIPE SIZE	1 385WH-U2 1/2	1-1/16	1.315	4
	1 385WH-U4 1/2	1-1/16	1.315	6
1 NOMINAL (1.315 DIA)	1 385WH-U7 1/2	1-1/16	1.315	9
	1 385WH-U10 1/2	1-1/16	1.315	12
	1 385WH-U13 1/2	1-1/16	1.315	15
	1 385WH-U16 1/2	1-1/16	1.315	18
	1 385WH-U22 1/2	1-1/16	1.315	24

SOCKET-WELD DESIGN THERMOWELLS

FOR 1/4 AND 3/8 DIAMETER ELEMENTS

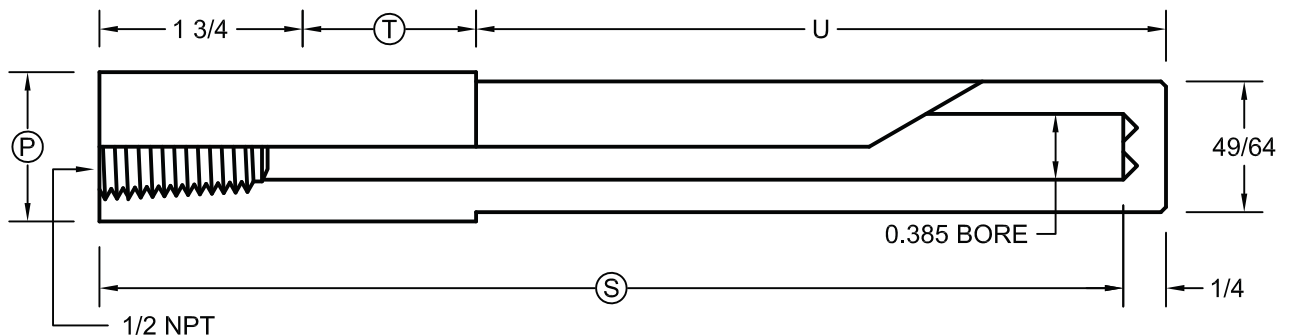
260WL SOCKET-WELD



P	PART NO.	Q	T	S
PIPE SIZE	3/4 260WL-U2 1/2	3/4	2	6
	3/4 260WL-U4 1/2	3/4	3	9
3/4 NOMINAL (1.050 DIA)	3/4 260WL-U7 1/2	3/4	3	12
	3/4 260WL-U10 1/2	3/4	3	15
	3/4 260WL-U13 1/2	3/4	3	18
	3/4 260WL-U19 1/2	3/4	3	24

P	PART NO.	Q	T	S
PIPE SIZE	1 260WL-U2 1/2	7/8	2	6
	1 260WL-U4 1/2	7/8	3	9
1 NOMINAL (1.315 DIA)	1 260WL-U7 1/2	7/8	3	12
	1 260WL-U10 1/2	7/8	3	15
	1 260WL-U13 1/2	7/8	3	18
	1 260WL-U19 1/2	7/8	3	24

385WL SOCKET-WELD



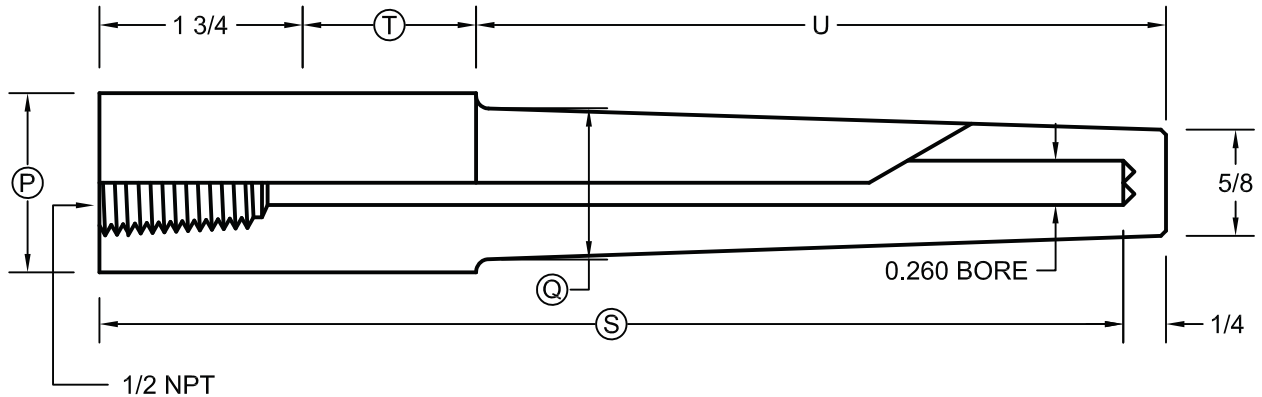
P	PART NO.	T	S
PIPE SIZE	3/4 385WL-U2 1/2	2	6
	3/4 385WL-U4 1/2	3	9
3/4 NOMINAL (1.050 DIA)	3/4 385WL-U7 1/2	3	12
	3/4 385WL-U10 1/2	3	15
	3/4 385WL-U13 1/2	3	18
	3/4 385WL-U19 1/2	3	24

P	PART NO.	T	S
PIPE SIZE	1 385WL-U2 1/2	2	6
	1 385WL-U4 1/2	3	9
1 NOMINAL (1.315 DIA)	1 385WL-U7 1/2	3	12
	1 385WL-U10 1/2	3	15
	1 385WL-U13 1/2	3	18
	1 385WL-U19 1/2	3	24

SOCKET-WELD DESIGN THERMOWELLS

FOR 1/4 AND 3/8 DIAMETER ELEMENTS

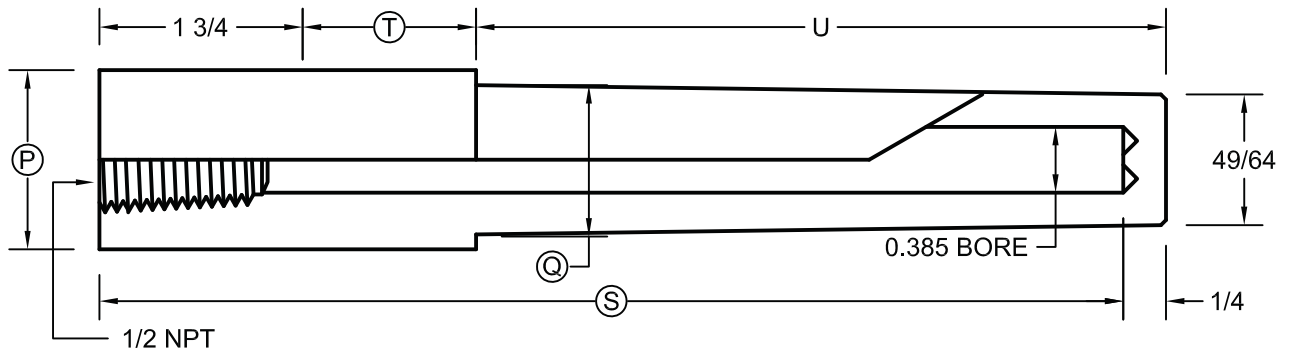
260WHL SOCKET-WELD



P	PART NO.	Q	T	S
PIPE SIZE	3/4 260WHL-U2 1/2	7/8	2	6
	3/4 260WHL-U4 1/2	7/8	3	9
3/4 NOMINAL (1.050 DIA)	3/4 260WHL-U7 1/2	7/8	3	12
	3/4 260WHL-U10 1/2	7/8	3	15
	3/4 260WHL-U13 1/2	7/8	3	18
	3/4 260WHL-U19 1/2	7/8	3	24

P	PART NO.	Q	T	S
PIPE SIZE	1 260WHL-U2 1/2	1-1/16	2	6
	1 260WHL-U4 1/2	1-1/16	3	9
1 NOMINAL (1.315 DIA)	1 260WHL-U7 1/2	1-1/16	3	12
	1 260WHL-U10 1/2	1-1/16	3	15
	1 260WHL-U13 1/2	1-1/16	3	18
	1 260WHL-U19 1/2	1-1/16	3	24

385WHL SOCKET-WELD



P	PART NO.	Q	T	S
PIPE SIZE	3/4 385WHL-U2 1/2	7/8	2	6
	3/4 385WHL-U4 1/2	7/8	3	9
3/4 NOMINAL (1.050 DIA)	3/4 385WHL-U7 1/2	7/8	3	12
	3/4 385WHL-U10 1/2	7/8	3	15
	3/4 385WHL-U13 1/2	7/8	3	18
	3/4 385WHL-U19 1/2	7/8	3	24

P	PART NO.	Q	T	S
PIPE SIZE	1 385WHL-U2 1/2	1-1/16	2	6
	1 385WHL-U4 1/2	1-1/16	3	9
1 NOMINAL (1.315 DIA)	1 385WHL-U7 1/2	1-1/16	3	12
	1 385WHL-U10 1/2	1-1/16	3	15
	1 385WHL-U13 1/2	1-1/16	3	18
	1 385WHL-U19 1/2	1-1/16	3	24