

# FLANGED THERMOWELLS

For everyday temperature needs

## Application

Thermowells for temperature instruments are recommended for all process systems where pressure, velocity or viscous, abrasive and corrosive materials are present individually or in combination.

A properly selected thermowell will protect the temperature instrument from possible damage resulting from these process variables.

Furthermore, a thermowell permits removal of the temperature instrument for replacement, repair or testing without affecting the process media or the system.



## Standard Features

Process Connections:

Threaded

Instrument Connection:

½" NPSM Standard

Shank Configurations:

Stepped, straight, tapered

Bore Diameter:

.260", .385"

Materials:

Brass, AISI 304, AISI 316

(other materials available upon request)

Surface Finish:

Brass: 60-100 Ra

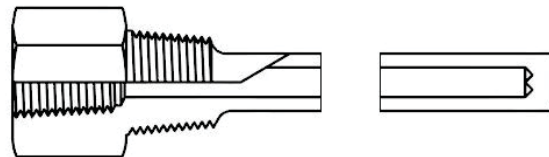
AISI 304 & AISI 316: 60-100 Ra

Ordering Information:

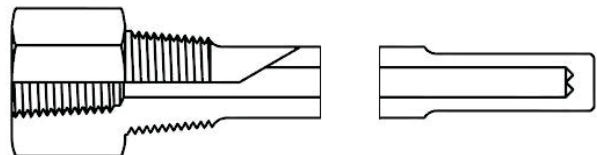
Please feel free to call 1-800-259-2706

Visit us at [MasterGaugeCo.com](http://MasterGaugeCo.com)

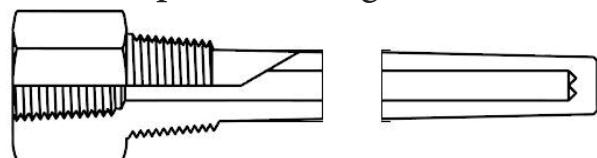
## Straight Configuration



## Stepped Configuration



## Tapered Configuration



**Master Gauge Co.**

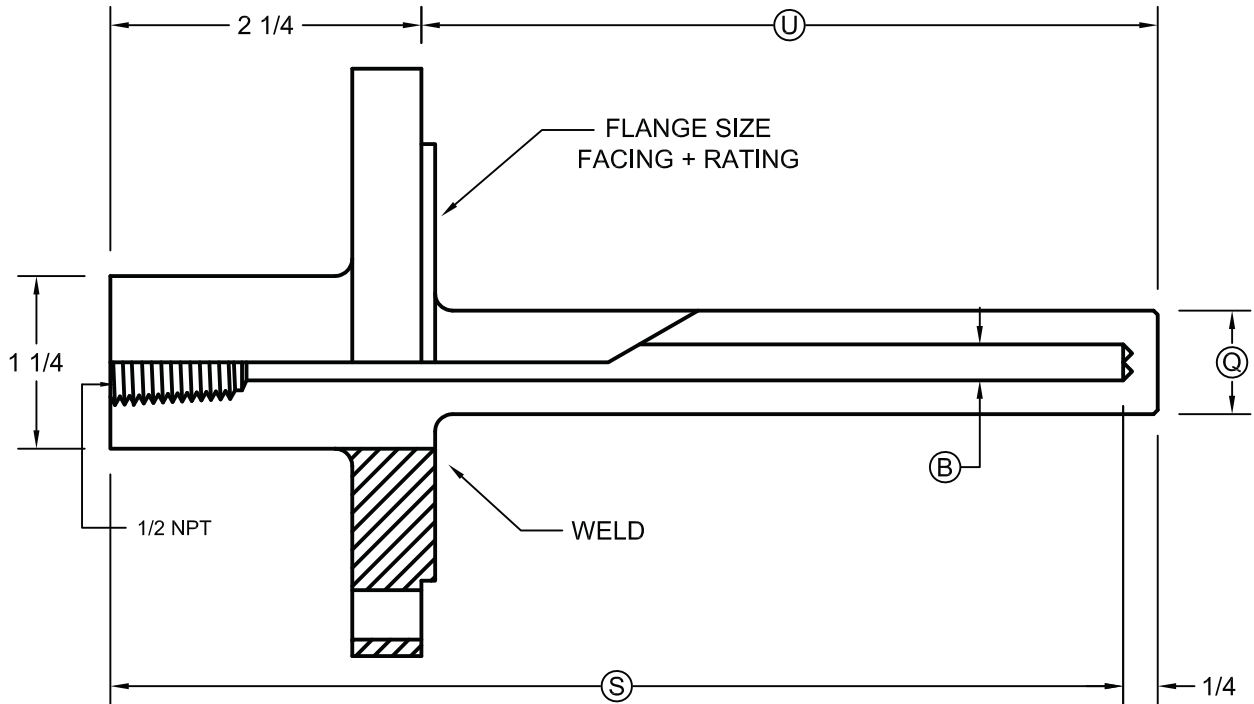


**WHEN UNDER PRESSURE THINK OF US!**

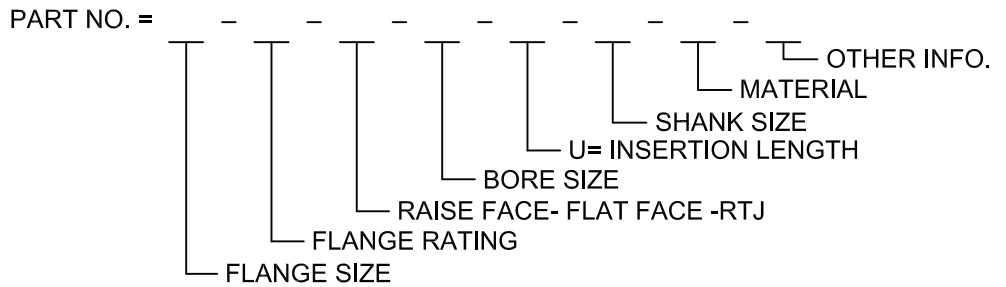
1150 W. GRAND AVE. CHICAGO, IL 60642 - TOLL-FREE: 1-800-259-2705 - PHONE: 1-312-666-2705 - FAX: 1-312-666-6458 - [MASTERGAUGECo.COM](http://MASTERGAUGECo.COM)

# FLANGED THERMOWELLS

## FOR 1/4 AND 3/8 DIAMETER ELEMENTS



SIZE	RATING	FACING
1	150	RF OR FF
1 1/2	150	RF OR FF
2	150	RF OR FF
1	150	RTJ
1 1/2	150	RTJ
2	150	RTJ
1	300	RF OR FF
1 1/2	300	RF OR FF
2	300	RF OR FF
1	300	RTJ
1 1/2	300	RTJ
2	300	RTJ
1	400-600	RF OR FF
1 1/2	400-600	RF OR FF
2	400-600	RF OR FF
1	400-600	RTJ
1 1/2	400-600	RTJ
2	400-600	RTJ
1	900-1500	RF OR FF
1 1/2	900-1500	RF OR FF
2	900-1500	RF OR FF
1	900-1500	RTJ
1 1/2	900-1500	RTJ
2	900-1500	RTJ



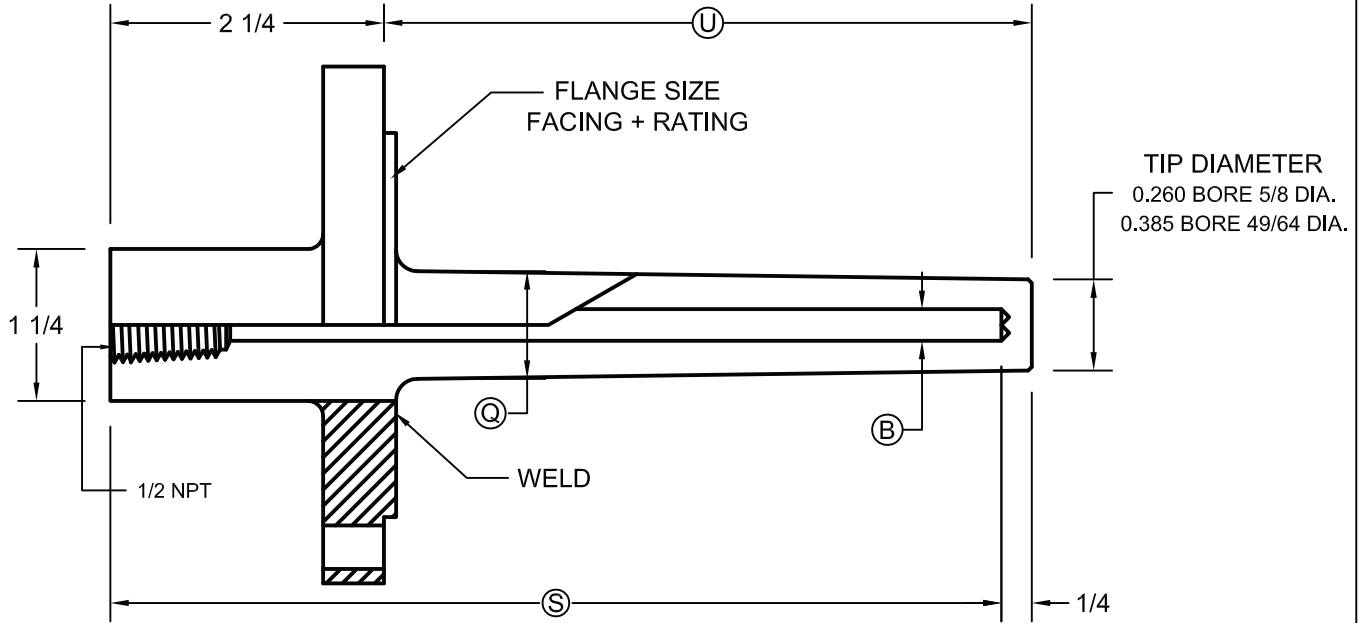
### B= 260F

PART NO.	Q	U	S
260F- U2	3/4	2	4
260F- U4	3/4	4	6
260F- U7	3/4	7	9
260F- U10	3/4	10	12
260F- U13	3/4	13	15
260F- U16	3/4	16	18
260F- U22	3/4	22	24

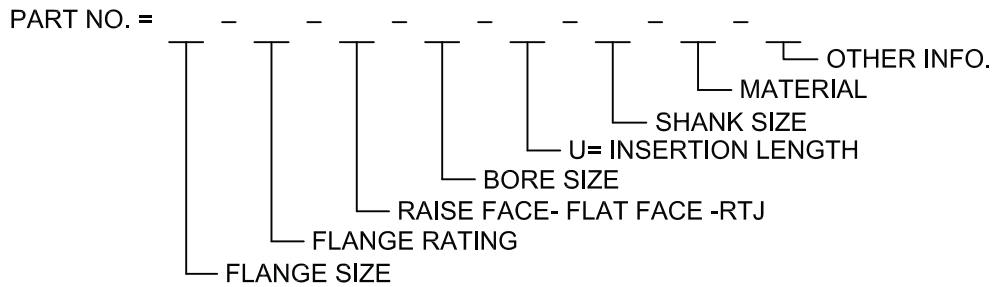
### B= 385F

PART NO.	Q	U	S
385F- U2	7/8	2	4
385F- U4	7/8	4	6
385F- U7	7/8	7	9
385F- U10	7/8	10	12
385F- U13	7/8	13	15
385F- U16	7/8	16	18
385F- U22	7/8	22	24

# FLANGED THERMOWELLS TAPER SHANK FOR 1/4 AND 3/8 DIAMETER ELEMENTS



SIZE	RATING	FACING
1	150	RF OR FF
1 1/2	150	RF OR FF
2	150	RF OR FF
1	150	RTJ
1 1/2	150	RTJ
2	150	RTJ
1	300	RF OR FF
1 1/2	300	RF OR FF
2	300	RF OR FF
1	300	RTJ
1 1/2	300	RTJ
2	300	RTJ
1	400-600	RF OR FF
1 1/2	400-600	RF OR FF
2	400-600	RF OR FF
1	400-600	RTJ
1 1/2	400-600	RTJ
2	400-600	RTJ
1	900-1500	RF OR FF
1 1/2	900-1500	RF OR FF
2	900-1500	RF OR FF
1	900-1500	RTJ
1 1/2	900-1500	RTJ
2	900-1500	RTJ



**B= 260F**

PART NO.	Q	U	S
260FH- U2	7/8	2	4
260FH- U4	7/8	4	6
260FH- U7	7/8	7	9
260FH- U10	7/8	10	12
260FH- U13	1-1/16	13	15
260FH- U16	1-1/16	16	18
260FH- U22	1-1/16	22	24

**B= 385F**

PART NO.	Q	U	S
385FH- U2	7/8	2	4
385FH- U4	7/8	4	6
385FH- U7	7/8	7	9
385FH- U10	7/8	10	12
385FH- U13	1-1/16	13	15
385FH- U16	1-1/16	16	18
385FH- U22	1-1/16	22	24