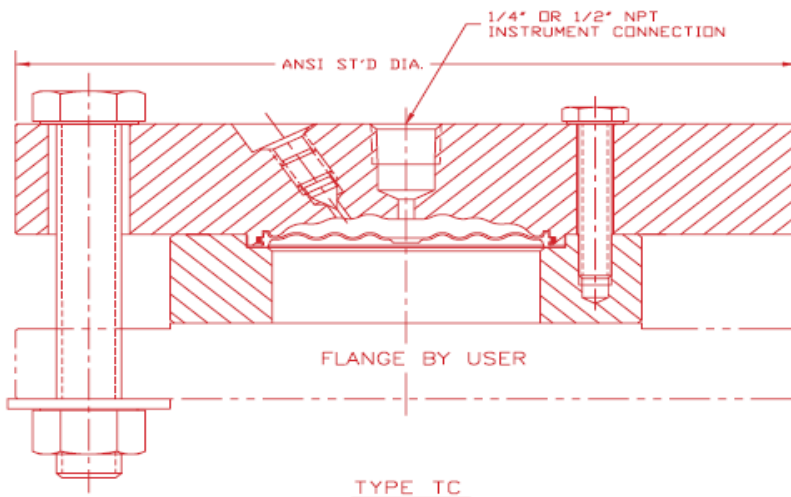
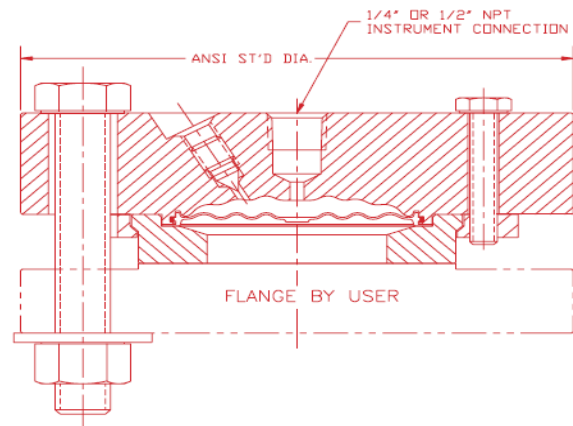
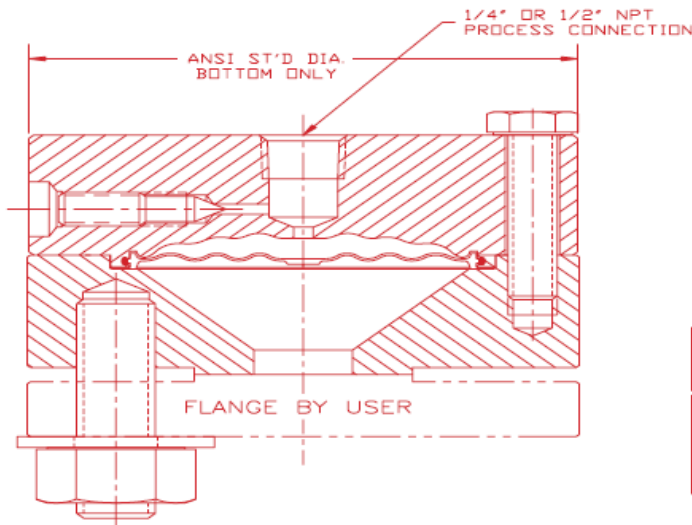




General Corrosive Application Teflon Diaphragm Flanged Seal Types TC & TD

Model Specific Information

- ✓ **TC** models are **flange attached**.
- ✓ **TD** models are **flange attached with flushing connection**.
- ✓ **Plugs** for flushing connection **are not supplied** and must be ordered as parts.
- ✓ For **socket weld (tubing)**, use **process connection size** (5th character) to indicate **tube diameter**.
- ✓ For **socket weld (pipe)**, use **process connection size** (5th character) and **schedule** (10th character) to indicate **pipe size**.
- ✓ Note that **316SS bolting** may **not** offer sufficient strength for ANSI rated pressure.



TYPE TC

Master Gauge Co.



WHEN UNDER PRESSURE THINK OF US!

1150 W. GRAND AVE. CHICAGO, IL 60642 - TOLL-FREE: 1-800-259-2705 - PHONE: 1-312-666-2705 - FAX: 1-312-666-6458 - MASTERGAUGE.CO.COM

© 2009, AMETEK, Inc., All Rights Reserved.